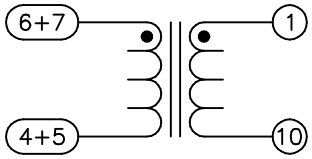
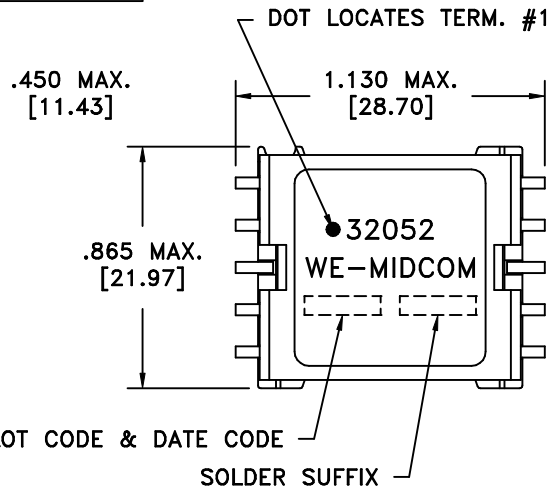
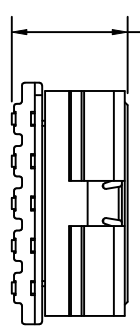
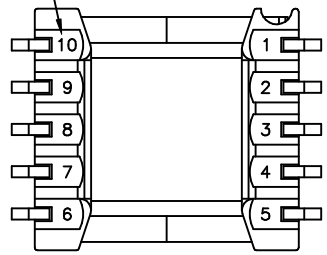
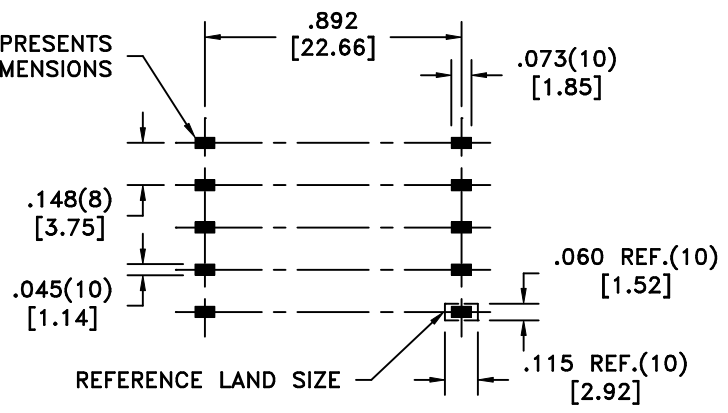


SOLDER SUFFIX	CUSTOMER TERMINAL	RoHS	LEAD(Pb)-FREE
	Sn100%	No	No
LF3	Sn100%	Yes	Yes

TERM. NO.'s FOR REF. ONLY



AREA REPRESENTS TERMINAL PAD DIMENSIONS



CUSTOMER TO DETERMINE LAND LAYOUT

ELECTRICAL SPECIFICATIONS @ 25°C unless otherwise noted:

- D.C. RESISTANCE (@20°C): 5-6(tie 4+5, 6+7), 0.02 ohms max.
1-10, 1.06 ohms max.
- DIELECTRIC RATING: 1000VDC, 1 minute tested by applying 1250VDC for 1 second between 1-6(tie 4+5).
- INDUCTANCE: 10.0uH ±10%, 10kHz, 100mVAC, 5-6(tie 4+5, 6+7), Ls.
- LEAKAGE INDUCTANCE: 0.3uH max., 100kHz, 10mAAC, 5-6(tie 1+10, 4+5, 6+7), Ls.
- TURNS RATIO: (1-10):(6-5) = 10:1, tie(4+5, 6+7), ±2%.
- Midcom p/n 32052R-LF3 is eiSos p/n: 750032052.

Unless otherwise specified:
Tolerances:
Angles: ±1°
Fractions: ±1/64
Decimals: ±.005[.13]

This drawing is dual dimensioned.
Dimensions in brackets are in millimeters.

DRAWING TITLE
TRANSFORMER

eiSos p/n: 750032052

SEE REVISION SHEET FOR REVISION LEVEL

Midcom www.midcom-inc.com

PART NO.
32052R/-LF3

REV.
6C
1/08

SPECIFICATION SHEET 1 OF 1

PART #
32052R/-LF3